

RADIAL CENTRIFUGAL FANS

ACT SERIES

➔ for duct application

DESCRIPTION:

The ACT series centrifugal fans are designed to be used in commercial and industrial environments for ventilation systems where average airflows at significant pressures are required.

The design features of this product make it suitable for all types of ducts.



MAIN FEATURES:

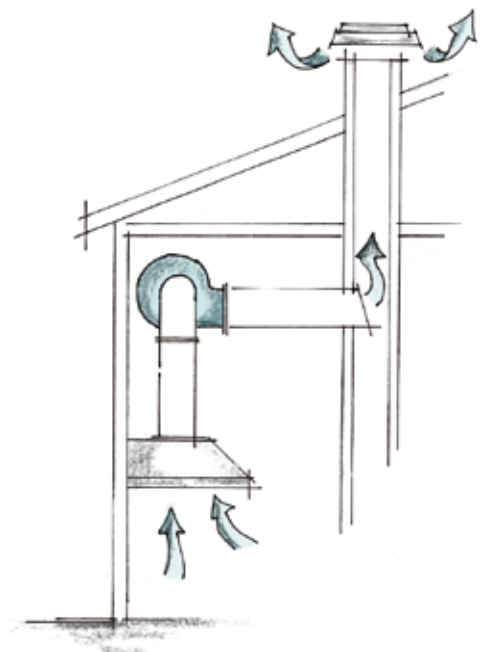
- Steel body tinted with epoxy resin coating.
- Simple forward-curved impeller, directly coupled with the motor.
- Self-ventilated motor, Class F - IP55, with "LONG LIFE" ball bearings, mounted outside of the air flow.
- For continuous operation in environments with max temperature 40°C.
- Supplied with "LG" counterclockwise left rotation, motor side view.
- Cochlea that is going to orientate in 8 positions for ACT 20, 25, 30, 35, 40 models.
- Extraction side safety grille, standard for all models.
- Inlet nozzle ring, standard, supplied for ACT 20, 25, 30, 35, 40 models.
- Motor saddle bracket supplied as standard for the ACT 40/4 TF model.

ACCESSORIES:

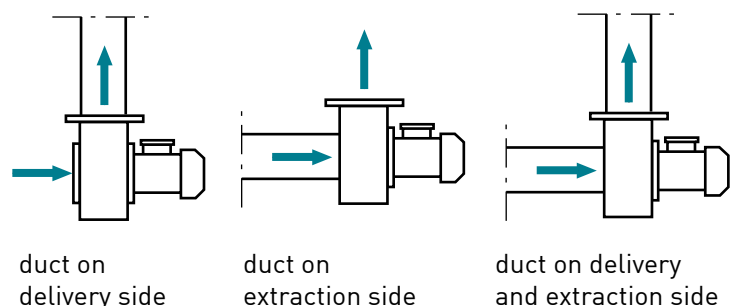
- Phase slicing speed regulator for monophase motors.
- Motor saddle bracket.
- Inlet nozzle ring, for ACT 10, 12, 15, 17 models.
- Safety grille on the delivery side.

ON DEMAND:

- Clockwise rotation "RD" for ACT 20, 25, 30, 35, 40 models.

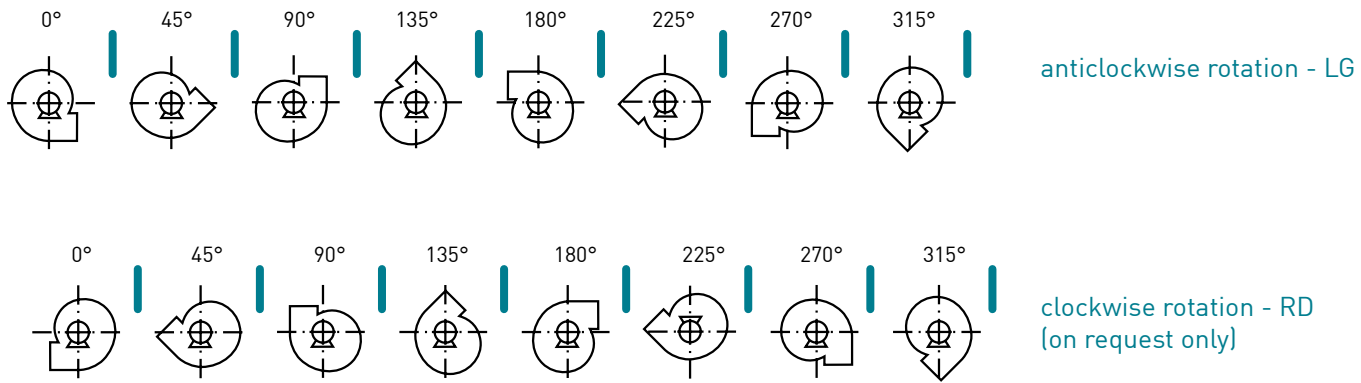


Installation examples



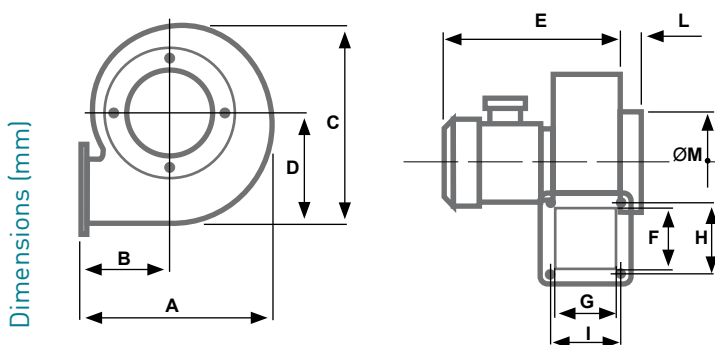
COCHLEA ORIENTATION

ACT 20-25-30-35-40 - the cochlea orientation views are intended as seen from motor side



DIMENSIONS

MODEL	A	B	C	D	E	F	G	H	I	L	ØM
ACT 10/2 TF	191	90	235	133	272	80	90	102	112	-	-
ACT 10/2 MF	191	90	235	133	277	80	90	102	112	-	-
ACT 12/2 TF	191	90	235	133	272	80	90	102	112	-	-
ACT 12/2 MF	191	90	235	133	277	80	90	102	112	-	-
ACT 15/2 TF	299	145	334	193	337	125	125	147	147	-	-
ACT 15/2 MF	299	145	334	193	362	125	125	147	147	-	-
ACT 15/4 TF	299	145	334	193	317	125	125	147	147	-	-
ACT 15/4 MF	299	145	334	193	332	125	125	147	147	-	-
ACT 17/2 TF	299	145	334	193	337	125	125	147	147	-	-
ACT 17/2 MF	299	145	334	193	362	125	125	147	147	-	-
ACT 17/4 TF	299	145	334	193	327	125	125	147	147	-	-
ACT 17/4 MF	299	145	334	193	342	125	125	147	147	-	-
ACT 20/2 TF	346	155	382	221	415	155	155	187	187	20	200
ACT 20/4 TF	346	155	382	221	370	155	155	187	187	20	200
ACT 20/4 MF	346	155	382	221	390	155	155	187	187	20	200
ACT 25/4 TF	430	190	480	278	430	190	190	222	222	20	250
ACT 25/4 MF	430	190	480	278	455	190	190	222	222	20	250
ACT 25/6 TF	430	190	480	278	410	190	190	222	222	20	250
ACT 30/4 TF	463	220	489	297	505	220	220	252	252	20	300
ACT 30/6 TF	463	220	489	297	480	220	220	252	252	20	300
ACT 35/4 TF	532	250	564	345	575	250	250	282	282	20	350
ACT 35/6 TF	532	250	564	345	535	250	250	282	282	20	350
ACT 40/4 TF	596	275	642	393	600	275	275	307	307	20	400
ACT 40/6 TF	596	275	642	393	590	275	275	307	307	20	400



TECHNICAL SPECIFICATIONS

ACT SERIES - MONOPHASE

230V - 50HZ

CODE	MODEL	m ³ /hr	Pt max mmH ₂ O	Ref. curves	Rpm nom.	MOTOR				dB(A) 1,5mt	Kg
						Kw	A	Cl. Is.	IP		
2 POLES											
AP5041	ACT 10/2 MF	540	42	1	2800	0,22	1,05	F	55	69	5
AP5066	ACT 12/2 MF	610	45	2	2800	0,315	1,45	F	55	70	6
AP5082	ACT 15/2 MF	970	61	3	2800	0,68	3,3	F	55	75	11
AP5124	ACT 17/2 MF	1410	57	4	2800	0,7	3,3	F	55	76	11
4 POLES											
AP5108	ACT 15/4 MF	1150	23	6	1400	0,29	1,55	F	55	66	8
AP5140	ACT 17/4 MF	1280	28	7	1400	0,39	1,98	F	55	68	10
AP5173	ACT 20/4 MF	1750	35	8	1400	0,48	2,75	F	55	68	13
AP5199	ACT 25/4 MF	3460	55	9	1400	0,98	5	F	55	78	21

ACT SERIES - THREE-PHASE

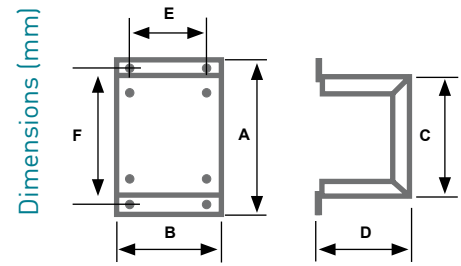
230V Δ - 400V λ - 50Hz

CODE	MODEL	m ³ /hr	Pt max mmH ₂ O	Ref. curves	Rpm nom.	MOTOR				dB(A) 1,5mt	Kg.	
						Kw	A(230VΔ)	A(400Vλ)	Cl. Is.			IP
2 POLES												
AP5033	ACT 10/2 TF	540	42	1	2800	0,185	0,45	0,33	F	55	69	4,5
AP5058	ACT 12/2 TF	610	45	2	2800	0,295	0,92	0,55	F	55	70	5
AP5074	ACT 15/2 TF	970	61	3	2800	0,67	1,95	1,13	F	55	75	9
AP5116	ACT 17/2 TF	1410	57	4	2800	0,69	1,95	1,13	F	55	76	9
AP5157	ACT 20/2 TF	2740	98	5	2800	1,92	5,6	3,2	F	55	82	20
4 POLES												
AP5090	ACT 15/4 TF	1150	23	6	1400	0,23	0,94	0,56	F	55	66	7
AP5132	ACT 17/4 TF	1280	28	7	1400	0,375	1,32	0,75	F	55	68	8
AP5165	ACT 20/4 TF	1750	35	8	1400	0,445	1,71	1	F	55	68	11
AP5181	ACT 25/4 TF	3460	55	9	1400	1	3,29	1,9	F	55	78	18
AP5215	ACT 30/4 TF	4890	93	10	1400	1,94	6,28	3,6	F	55	79	29
AP5231	ACT 35/4 TF	5410	101	11	1400	2,69	8,38	4,8	F	55	82	41
AP5256	ACT 40/4 TF	7700	125	12	1400	4,7	14,4	8,3	F	55	85	58
6 POLES												
AP5207	ACT 25/6 TF	2420	24	13	950	0,43	2,02	1,17	F	55	69	17
AP5223	ACT 30/6 TF	3410	40	14	950	0,75	3,7	2,16	F	55	71	26
AP5249	ACT 35/6 TF	4530	59	15	700	1,35	4,88	2,85	F	55	75	31
AP5264	ACT 40/6 TF	5120	53	16	700	1,4	5,25	3,1	F	55	76	41

ACCESSORIES

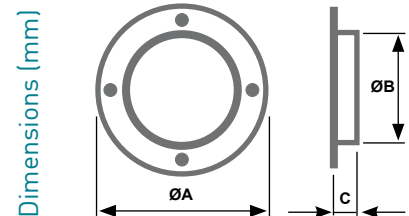
MOTOR SADDLE SUPPORT

CODE	MODEL	A	B	C	D	E	F
AP5512	SSM 10-12	175	160	125	100	80	150
AP5520	SSM 15-17	195	116	142	155	90	170
AP5538	SSM 20	220	137	170	190	100	195
AP5546	SSM 25	210	130	160	230	100	185
AP5553	SSM 30	220	153	170	250	125	195
AP5561	SSM 35	250	172	200	340	140	225
AP5579	SSM 40/6	250	173	200	340	140	225



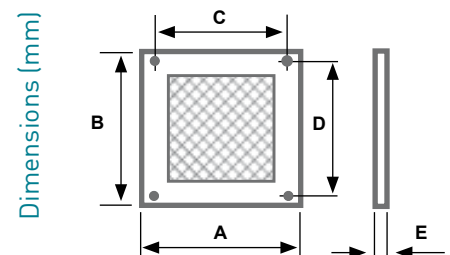
INLET NOZZLE RING

CODE	MODEL	ØA	ØB	C
AP5918	BIT 10	160	100	20
AP5926	BIT 12	160	120	20
AP5934	BIT 15	240	150	20
AP5942	BIT 17	240	170	20



INLET SAFETY PROTECTION GRILLE (its use is mandatory if the impeller (moving part) is accessible).

CODE	MODEL	ØA	B	C	D	E
AP5652	RPM 10-12	110	100	90	80	4
AP5660	RPM 15-17	145	145	125	125	4
AP5678	RPM 20	185	185	155	155	4
AP5686	RPM 25	220	220	190	190	4
AP5694	RPM 30	250	250	220	220	4
AP5702	RPM 35	280	280	250	250	4
AP5710	RPM 40	310	310	275	275	4



MONOPHASE SPEED REGULATORS

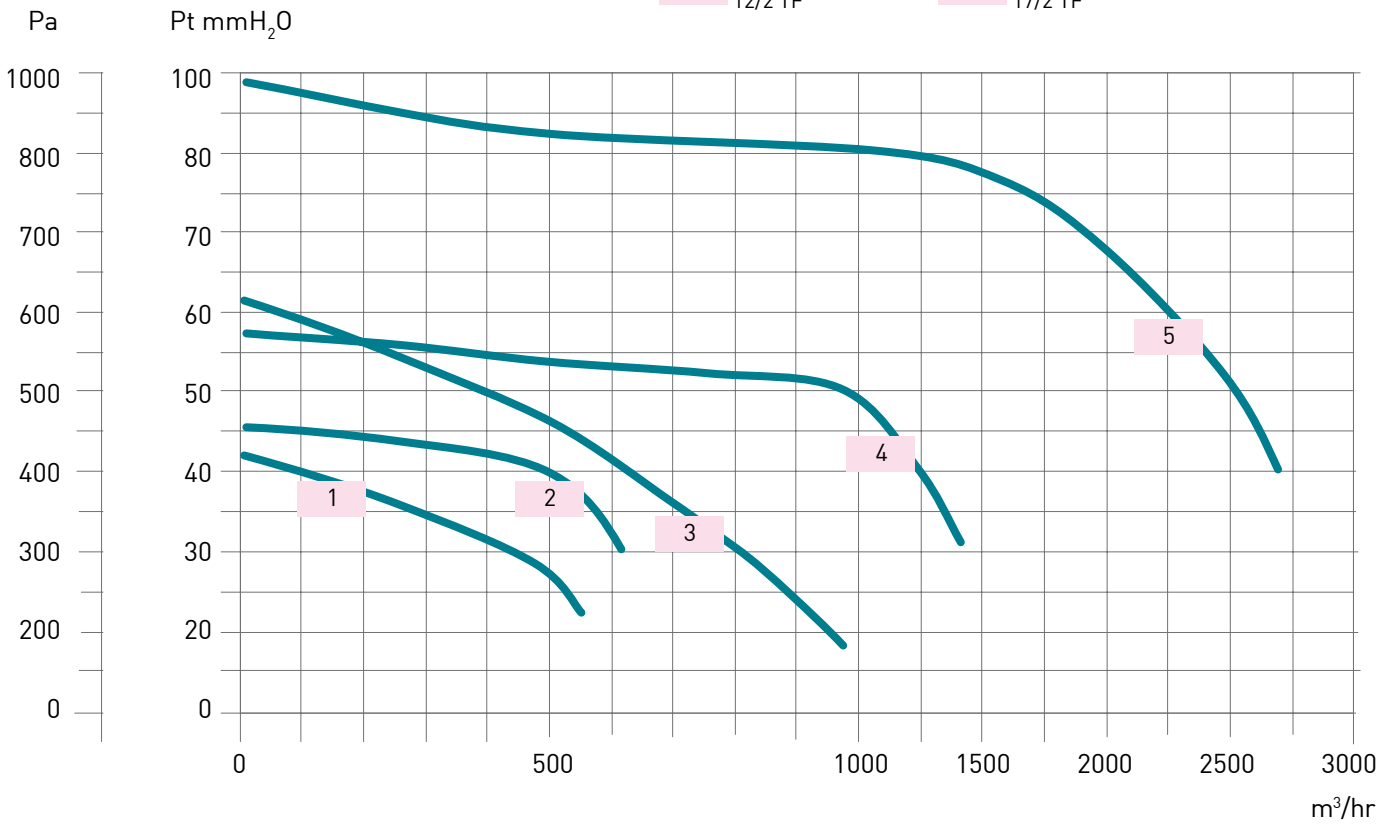
CODE	MODEL	to control all the models of the ACT series
AP2600	RDV 3-MF	10/2 MF, 12/2 MF, 15/4 MF, 17/4 MF
AP2642	RDV 5-MF	15/2 MF, 17/2 MF, 20/4 MF, 25/4 MF



CHARACTERISTIC CURVES

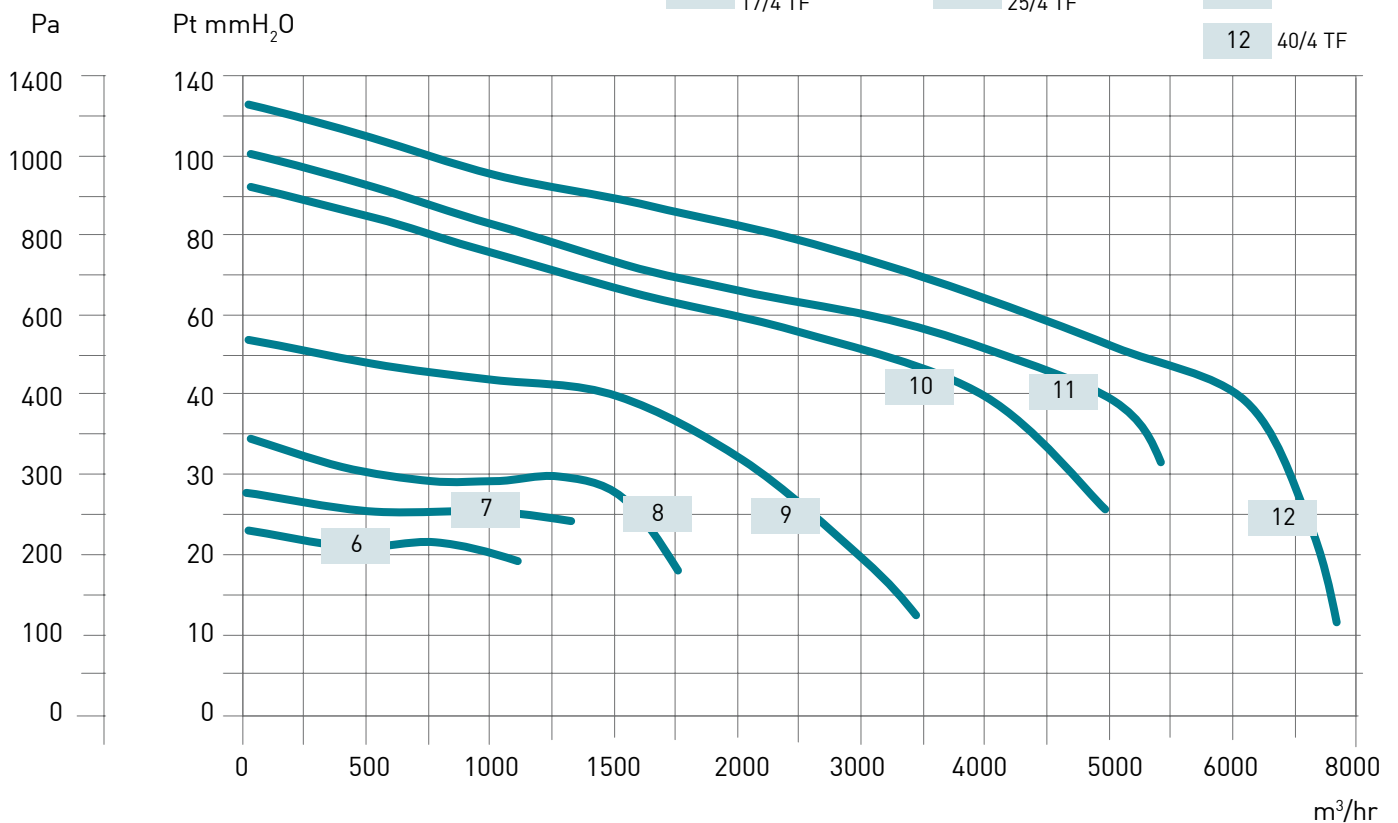
ACT SERIES - 2 POLES - 2800 RPM

- | | | | | | |
|---|--------------------|---|--------------------|---|---------|
| 1 | 10/2 MF
10/2 TF | 3 | 15/2 MF
15/2 TF | 5 | 20/2 TF |
| 2 | 12/2 MF
12/2 TF | 4 | 17/2 MF
17/2 TF | | |



ACT SERIES - 4 POLES - 1400 RPM

- | | | | | | |
|---|--------------------|---|--------------------|----|---------|
| 6 | 15/4 MF
15/4 TF | 8 | 20/4 MF
20/4 TF | 10 | 30/4 TF |
| 7 | 17/4 MF
17/4 TF | 9 | 25/4 MF
25/4 TF | 11 | 35/4 TF |
| | | | | 12 | 40/4 TF |



ACT SERIES - 6 POLES - 950 RPM

13

25/6 TF

15

35/6 TF

14

30/6 TF

16

40/6 TF

