

ROOF CENTRIFUGAL EXHAUSTER FANS

SERIES ATR

➔ horizontal flux

DESCRIPTION:

The roof extractor fans of the ATR series are designed for roof mounting and are suitable for foul air extraction from large industrial environments, like warehouses, workshops, parking areas, locker rooms etc., and anywhere is required high air volumes at significant pressures.

The design features of these centrifugal fans allow quick and secure installation on the tops of the vent ducts.

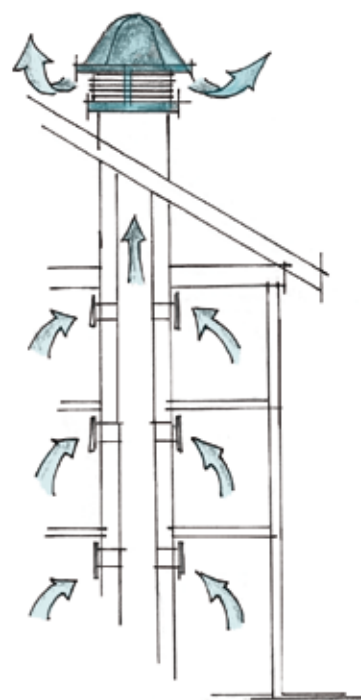


MAIN FEATURES:

- Steel body with epoxy resin coating.
- Backward-curved impeller in galvanized steel, statically and dynamically balanced.
- Protection dome made of high density structure plastic material and particularly resistant against the atmospheric agents corrosion action.
- Self-ventilated motor, Class F - IP55, with "LONG LIFE" ball bearings, mounted outside the air flow.
- For continuous operation in environments with max temperature 60°C.
- Eye bolts for lifting up, supplied from the ATR 500 model onwards.
- 2 speed motor models can be controlled by means of the three-phase switch, not supplied as an accessory, but easy to find on sale.

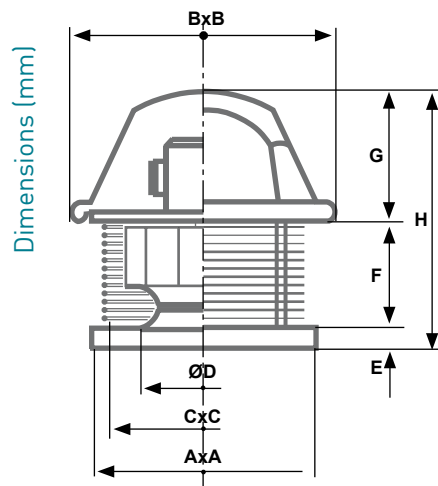
ACCESSORIES:

- Phase slicing speed regulator for monophase motors.
- Counter-basement.
- Backdraught gravity shutter.



DIMENSIONS

MODEL	AxA	BxB	CxC	ØD	E	F	G	H
ATR 100	400	490	350	250	40	190	240	470
ATR 200	400	490	350	250	40	190	240	470
ATR 300	550	640	500	310	40	240	270	550
ATR 400	550	640	500	310	40	240	270	550
ATR 500	700	790	610	380	40	280	320	640
ATR 600	700	790	610	380	40	280	320	640
ATR 700	900	990	810	510	40	375	420	835
ATR 800	900	990	810	510	40	375	420	835
ATR 900	900	990	810	510	40	375	420	835



TECHNICAL SPECIFICATIONS

ATR SERIES - MONOPHASE

230V - 50HZ

CODE	MODEL	m³/hr	Pt max mmH ₂ O	Ref. curves	Rpm nom.	MOTOR					dB(A) 3 mt	Kg
						Kw	A	Cl. Is.	IP			
4 POLES												
AP5017	ATR 104 M	1150	20	1	1400	0,12	1,2	F	55	57	15	
AP5025	ATR 204 M	1750	26	2	1400	0,18	1,45	F	55	63	17	
AP5801	ATR 304 M	2550	33	3	1400	0,37	3,4	F	55	66	26	
AP5819	ATR 404 M	3600	41	4	1400	0,55	3,6	F	55	67	30	
AP5827	ATR 504 M	5200	52	5	1400	0,75	5,15	F	55	72	43	

ATR SERIES - THREE-PHASE

230V Δ - 400V λ - 50Hz

CODE	MODEL	m³/hr	Pt max mmH ₂ O	Ref. curves	Rpm nom.	MOTOR					dB(A) 3mt	Kg.
						Kw	A(230VΔ)	A(400Vλ)	Cl. Is.	IP		
4 POLES												
AP5843	ATR 104 T	1150	20	1	1400	0,12	0,8	0,45	F	55	57	14
AP5868	ATR 204 T	1750	26	2	1400	0,18	1,1	0,65	F	55	63	16
AP6015	ATR 304 T	2550	33	3	1400	0,37	2,1	1,2	F	55	66	25
AP6031	ATR 404 T	3600	41	4	1400	0,55	2,7	1,6	F	55	67	28
AP6056	ATR 504 T	5200	52	5	1400	0,75	3,5	2	F	55	72	42
AP6072	ATR 604 T	7200	64	6	1400	1,1	4,5	2,6	F	55	75	51
6 POLES												
AP5850	ATR 106 T	750	7,5	7	950	0,18	1,3	0,75	F	55	47	15
AP5900	ATR 206 T	1100	9,5	8	950	0,18	1,3	0,75	F	55	54	16
AP6023	ATR 306 T	1600	12,5	9	950	0,18	1,3	0,75	F	55	56	23
AP6049	ATR 406 T	2350	16,5	10	950	0,37	2,4	1,4	F	55	57	27
AP6064	ATR 506 T	3350	21	11	950	0,37	2,4	1,4	F	55	62	40
AP6080	ATR 606 T	4600	26	12	950	0,37	2,4	1,4	F	55	64	45
AP6098	ATR 706 T	6700	35	13	950	0,75	3,6	2,1	F	55	68	74
AP6114	ATR 806 T	9500	44	14	950	1,1	5,2	3	F	55	72	78
AP6130	ATR 906 T	13600	56	15	950	1,5	6,7	3,9	F	55	77	98

ATR SERIES - THREE-PHASE

230V Δ - 400V λ - 50Hz

CODE	MODEL	m ³ /hr	Pt max mmH ₂ O	Ref. curves	Rpm nom.	MOTOR				dB(A) 1,5mt	Kg.	
						Kw	A(230V Δ)	A(400V λ)	Cl. Is.			
8 POLES												
AP6106	ATR 708 T	5000	20	16	700	0,37	2,5	1,4	F	55	61	74
AP6122	ATR 808 T	7200	25	17	700	0,55	3,2	1,8	F	55	64	76
AP6148	ATR 908 T	10500	32	18	700	1,1	5,9	3,4	F	55	68	99

ATR SERIES - 2 SPEED THREE-PHASE

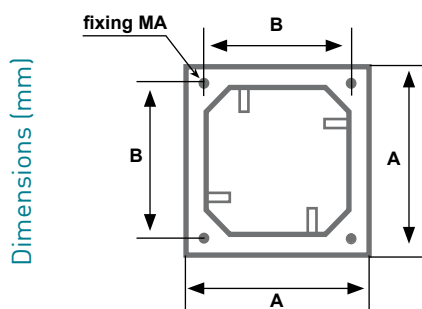
400V - 50HZ

CODE	MODEL	m ³ /hr	Pt max mmH ₂ O	Ref. curves	Rpm nom.	MOTOR				dB(A) 3mt	Kg.	
						Kw	A	Cl. Is.	IP			
4 - 6 POLES												
AP6155	ATR 104-6 DT	1150/750	20/7,5	1	7	1400/950	0,22/0,14	0,68/0,43	F	55	57/47	16
AP6163	ATR 204-6 DT	1750/1100	26/9,5	2	8	1400/950	0,22/0,14	0,68/0,43	F	55	63/54	17
AP6171	ATR 304-6 DT	2550/1600	33/12,5	3	9	1400/950	0,36/0,22	0,98/0,77	F	55	66/56	26
AP6189	ATR 404-6 DT	3600/2350	41/16,5	4	10	1400/950	0,51/0,29	1,3/1,1	F	55	67/57	29
AP7021	ATR 504-6 DT	5200/3350	52/21	5	11	1400/950	0,66/0,36	1,8/1,2	F	55	72/62	47
AP7047	ATR 604-6 DT	7200/4600	64/26	6	12	1400/950	0,95/0,58	2,7/1,9	F	55	75/64	52
6 - 8 POLES												
AP7070	ATR 706-8 DT	6700/5000	35/20	13	16	950/700	0,88/0,44	2,6/1,9	F	55	68/61	85
AP7088	ATR 806-8 DT	9500/7200	44/25	14	17	950/700	1,17/0,44	3,2/1,9	F	55	72/64	86
AP7094	ATR 906-8 DT	13600/10500	56/32	15	18	950/700	1,32/0,73	3,3/2,4	F	55	77/68	106

ACCESSORIES

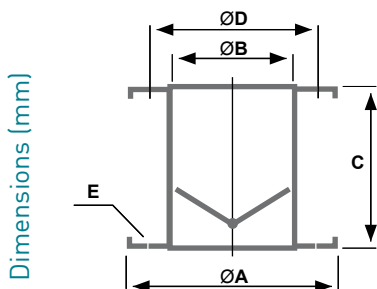
COUNTER-BASEMENT

CODE	MODEL	to be use with:	AxA	BxB	fixing MA
AP7672	CBT ATR 1.2	ATR 100 and 200 series	390	350	10
AP7680	CBT ATR 3.4	ATR 300 and 400 series	540	500	10
AP7688	CBT ATR 5.6	ATR 500 and 600 series	690	610	10
AP7694	CBT ATR 7.8.9	ATR 700, 800 and 900 series	890	810	10



BACKDRAUGHT GRAVITY SHUTTER

CODE	MODEL	to be use with:	ØA	ØB	C	ØD	E
AP2311	SGT 20	ATR 100 and 200 series	309	251	210	283	N°3xM8
AP2337	SGT 40	ATR 300 and 400 series	409	352	230	381	N°4xM8
AP2352	SGT 60	ATR 500 and 600 series	510	451	300	485	N°5xM8
AP2378	SGT 80	ATR 700, 800 and 900 series	620	552	320	585	N°6xM8



MONOPHASE SPEED REGULATORS

CODE	MODEL	to control the ATR series models
AP2600	RDV 3-MF	104 M, 204 M

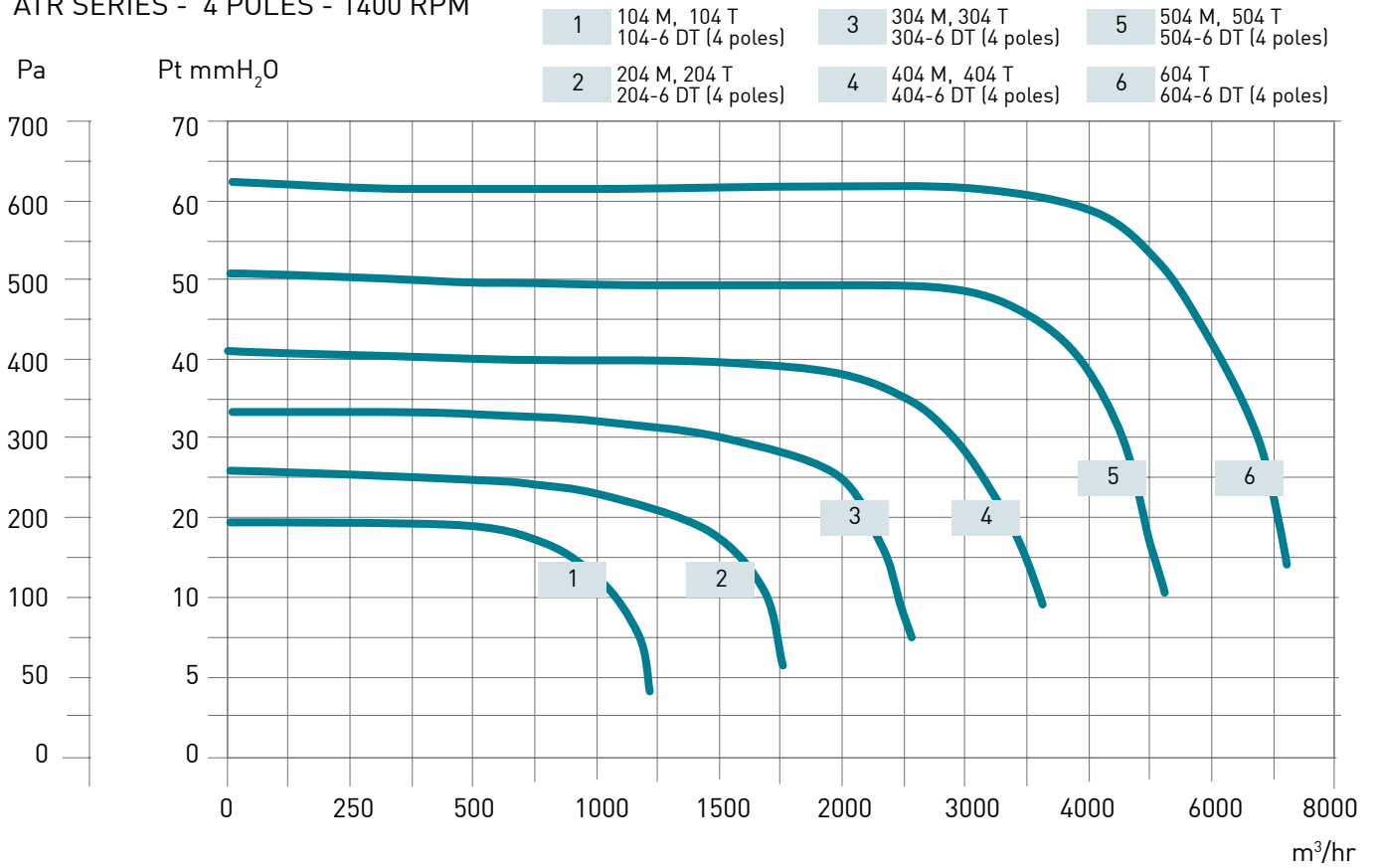


CODE	MODEL	to control the ATR series models
AP2642	RDV 5-MF	304 M, 404 M, 504 M

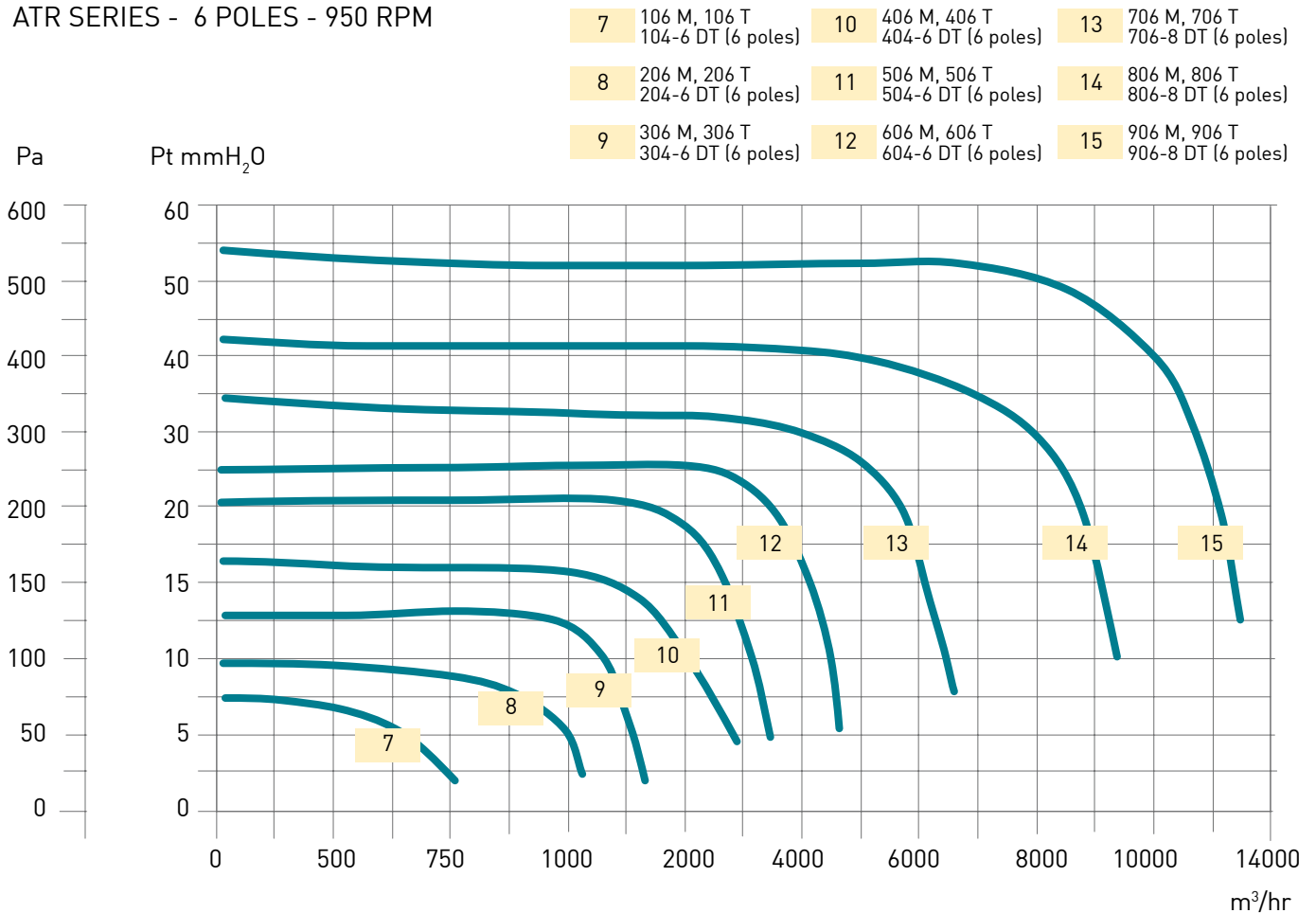


CHARACTERISTIC CURVES

ATR SERIES - 4 POLES - 1400 RPM



ATR SERIES - 6 POLES - 950 RPM



ATR SERIES - 8 POLES - 700 RPM

16 708 T 706-8 DT (8 poles) 17 806 T 806-8 DT (8 poles) 18 908 T 906-8 DT (8 poles)

