

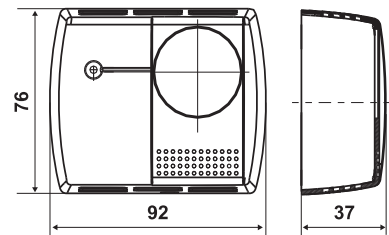
# C16

## Electromechanical room thermostats with vapor expansion

Room thermostats for ambient temperature control in heating systems, in civil and industrial cooling applications.



Dimensions (mm)



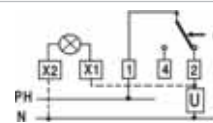
	Temperature regulation range	Differential*	Body admissible temperature	Contacts rating	Protection degree
C16 <input type="checkbox"/>	10 ÷ 30 °C	0,8 K	-10 ÷ 50 °C	10(2,5)A 250Vac	IP20

### CONTROL AND SIGNALLING VARIANTS

### CONNECTION EXAMPLES (hatched connections by the customer)

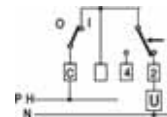
L

WITH SIGNALLING LIGHT



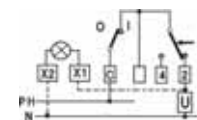
I

WITH ON-OFF SWITCH



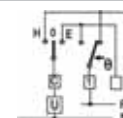
IL

WITH ON-OFF SWITCH AND SIGNALLING LIGHT



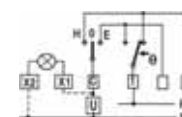
EH

WITH SUMMER-WINTER SWITCH



EHL

WITH SUMMER-WINTER SWITCH AND SIGNALLING LIGHT

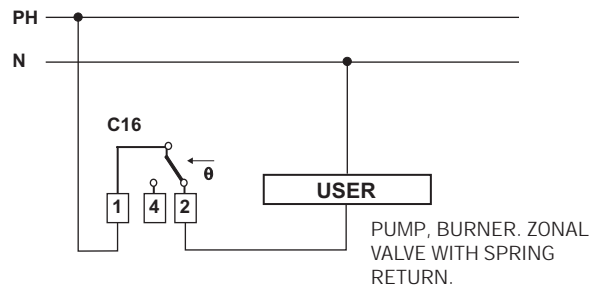


\*The differential value must be deducted from the range value. Differential values are referred to a thermal gradient of 4K/h.

# ELECTRICAL FEATURES

Snap action SPDT microswitch with AgNi contacts.  
Contact rating: 10(2,5)A 250 Vac.

## EXAMPLE OF ELECTRICAL WIRING



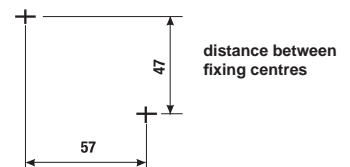
# HOMOLOGATION AND STANDARDS

Complies with EN 60730-2-9 standards



# INSTALLATION

Wall mounting.



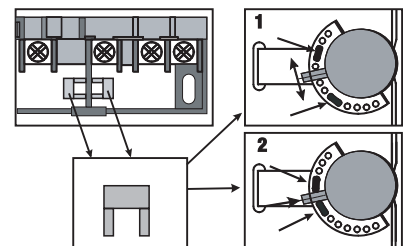
# OPERATION

When the temperature rises: 1-2 opens, 1-4 closes.

Vapor pressure operation.

The thermostat has 2 thermoplastic clamps, which allow blocking or limiting the scale range, for preventing damages, etc.

## SCALE RANGE BLOCKING OR LIMITATION



# FEATURES

Sensitive element with electrically welded stainless steel capsule containing saturated vapor.

Base, cover and knob in thermoplastic material.

Connection with the user with only 2 wires.

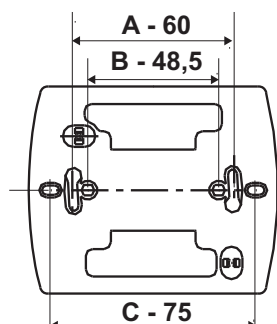
Action type 1B.

Protection class I.

Testing class II.

Unit weight 0,14 Kg.

# ACCESSORIES



## TC16

Frame for mounting on:

- A - 60 mm round box, fixing by means of screws.
- B - round box with staples (not supplied).
- C - round box, distance between axes 75 mm.