

## ADVANCED *Intellitherm C56* FUNCTIONS

### MONITORING HOW MANY HOURS THE HEATING STAYS ON

With Intellitherm C56, you can keep a check on how many hours the heating has actually been on (relay closed - ON) on the previous day or since the temperature controller was last enabled (i.e. since the last time the batteries were changed or the device was reset).

- 1 Move the switch **S** to the position
- 2 Move the switch **P** to the **PROG** position
- 3 Read the hours of heating on the previous day
- 4 Read the hours of heating since the controller was enabled.

### MINIMUM AND MAXIMUM ROOM TEMPERATURE ON THE PREVIOUS DAY

With Intellitherm C56 you can also keep a check on the **MINIMUM** and **MAXIMUM** temperatures recorded in the room on the previous day and the time when they occurred.

- 1 Move the switch **S** to the (economy) position for the **MINIMUM** temperature or to the (Comfort) position for the **MAXIMUM** temperature
- 2 Move the switch **P** to the **PROG** position
- 3 Read the **MINIMUM** or **MAXIMUM** room temperature
- 4 Read the time when said **MINIMUM** or **MAXIMUM** temperature was recorded

### SUMMER - AIR CONDITIONING OPERATION

When you move the switch **I** to the **SUMMER** position, Intellitherm C56 switches to operating the **AIR CONDITIONING** system. The red knob is used for adjusting the comfort mode temperature required in the room, while the economy and antifreeze modes are disabled. The red sectors on the ring appearing on the display consequently indicate the hours when the air-conditioning system is in operation, while the sectors in any other color indicate when it is off.

### TELEPHONE ACTIVATOR

Intellitherm C56 has been designed for combining with the **CT5 telephone activator**. This accessory enables remote control of the temperature controller by means of a normal telephone line. The CT5 telephone activator is equipped with a voice synthesizer that enables its immediate and straightforward use. It also enables remote monitoring of the room temperature and of the proper operation of the temperature controller. CT5 even enables the remote control of virtually any other electrical appliance (sprinklers, household appliances, etc.).

### TECHNICAL FEATURES

- In compliance with the CEI EN 60730-1 and parts two
- Terminal carrying capacity 8 (5) A 250 $\mu$ c
- Micro-disconnection (1BU)
- Co-load switching contact
- Temperature control:
  - **comfort from 2 to 62 °C**
  - **economy from 2 to 62 °C**
- Differential  $\pm 0.25$  °C
- Reference thermal gradient 4° K/h
- OFF mode with optional antifreeze protection (5 °C) selected by means of a dip switch
- double insulation
- Protection grade IP 20 (normal pollution)
- Powered by 2 alkaline AA 1.5V pencil Batteries, with no connection to the mains
- Battery life two years approx.
- Automatic monitoring of battery charge with signal on display when battery is low
- Battery changing without losing previously-memorized programs
- Switch for summer/winter operating modes
- Reset button for restoring standard program
- Overall dimensions: 120 x 80 x 27 mm

We reserve the right to make any technical and structural changes deemed necessary without .

# FANTINI COSMI

Via dell'Osio, 6 20090 Caleppio di Settala MI - ITALY  
International calls Tel. ++39 02 95682222  
Fax +39 02 95307006  
E-mail: export@fantinicosmi.it <http://www.fantinicosmi.com>



## Intellitherm Techno D - C56

### DAILY TEMPERATURE CONTROLLER

#### 1 - WALL MOUNTING

Intellitherm C56 is supplied complete with a base suitable for mounting flush in a rectangular three-module or a round outlet box, or for attaching to the wall.

Fit the controller **1.5 m** above floor level, well away from kitchens, sources of heat, doors or windows. Make sure that the base is attached on a level and without any straining.

#### 2 - ELECTRIC CONNECTIONS

Connect terminals **1 - 2** to the heating system with two wires, replacing the conventional thermostat at any time, without adding any further connections. When the room temperature increases, the relay **opens** terminals **1 - 2** and **closes 1 - 4**. Terminal **4** is free and can be used for signals or other purposes.

#### 3 - SELECTING THE OFF MODE

During periods when it is **OFF**, Intellitherm can be set to maintain a temperature setting of 5°C to protect the system from the risk of freezing. If you require such **ANTIFREEZE** protection, position the dip switch (situated at the bottom left-hand side on the back of the body of the C56) on **HIGH**. If, on the other hand, you want the system to be switched **OFF** completely, position the dip switch on **LOW**. This selection must be made at the time of installation and before fitting the batteries.

**NOTE: if, at any time after installation, you wish to change this selection, the Intellitherm must be reset and reprogrammed.**

#### 4 - FITTING THE BODY OF THE TEMPERATURE CONTROLLER ON THE BASE

#### 5 - FITTING THE BATTERIES

Insert two good-quality, alkaline long-life **AA 1.5 V** pencil batteries in the space provided, taking care to comply with the polarity indicated. The batteries can last about two years; when they begin to run down, the battery symbol on the display starts to flash . If the batteries are not changed within 15 days, Intellitherm C56 will automatically switch off and only the word **OFF** will appear on the display.

#### DISTANCE BETWEEN CENTERS FOR FIXING THE BASE

A = for rectangular flush-mounted boxes type 503 (three modules)  
B = for round flush-mounted boxes

LOOSEN THIS SCREW AND TURN THE BODY OF THE CONTROLLER UPWARDS TO DETACH THE BASE FOR FIXING TO THE WALL.

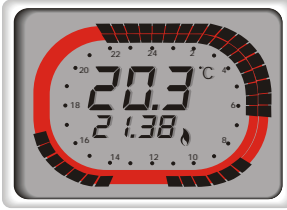
#### TERMINAL BOARD AND CONNECTIONS

#### SELECTING THE OFF OR OFF+ANTIFREEZE PROTECTION MODES

#### FITTING AND CHANGING THE BATTERIES

Lift the cover and fit two 1.5V batteries

## THE *Intellitherm C56* DISPLAY



At all times, the display shows the room temperature, the actual time of day, whether there is any demand for heating (or for conditioning in summer) and the battery low signal. The display also shows a programming ring that represents a 24-hour clock, divided into 48 sectors, each corresponding to half an hour. Each sector is further divided in half and colored red, red-and-black, or black (depending on the program selected). The color of the sectors indicates the type of temperature programmed for that particular time of day, i.e.

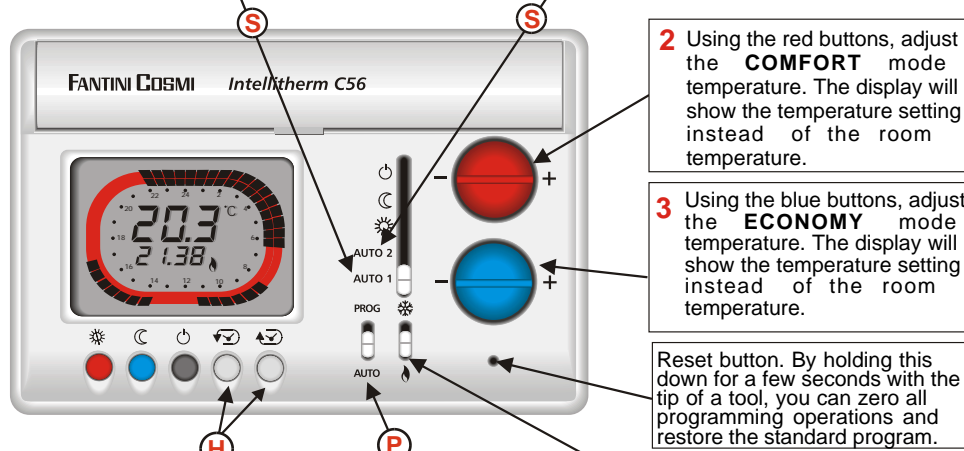
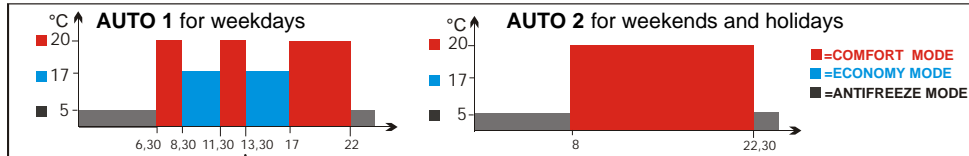
- red = comfort temperature
- half red and half black = economy temperature
- black = off.

## USING *Intellitherm C56* WITH THE STANDARD PROGRAMS

i.e. with the default schedules and temperatures already programmed at the factory

After installing and wiring up the C56, simply follow the numbered steps specified below.

1 Move the switch S to one of the two STANDARD AUTOMATIC PROGRAMS, AUTO 1 or AUTO 2, with the default schedules and temperatures already programmed at the factory.



**SETTING THE ACTUAL TIME**  
This step can also be taken before all the others.

6 Adjust the actual time using the

5 Make sure that the switch P is low, on the AUTO (automatic) position

4 Make sure that the switch I is low, on the winter position Inserire simbolo

Reset button. By holding this down for a few seconds with the tip of a tool, you can zero all programming operations and restore the standard program.

3 Using the blue buttons, adjust the ECONOMY mode temperature. The display will show the temperature setting instead of the room temperature.

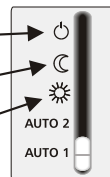
2 Using the red buttons, adjust the COMFORT mode temperature. The display will show the temperature setting instead of the room temperature.

## THE OTHER *Intellitherm C56* PROGRAMS

**OFF** - this keeps the system constantly off or with the antifreeze protection option enabled, depending on the choice made at the time of installation (see previous page).

**ALWAYS ECONOMY** - this constantly maintains the economy mode temperature selected by means of the blue buttons.

**ALWAYS COMFORT** - this constantly maintains the comfort mode temperature selected by means of the red buttons.



## CUSTOMIZING THE *Intellitherm C56* (PROGRAMMING)

Programming the *Intellitherm C56* is extremely straightforward. All you have to do is change the color of the sectors on the ring that coincide with the schedules you require, i.e.

- red for the hours when you want the comfort mode temperature
- red and black for the hours when you want the economy mode temperature
- black for the hours when you want the system switched off.

To change the color of the sectors, simply follow the numbered steps below.

2 Place the switch P high, on the PROG (programming) position. The display will indicate 00.00 hours. The flashing cursor on the ring will automatically come into position on the first sector after the 24 hours.

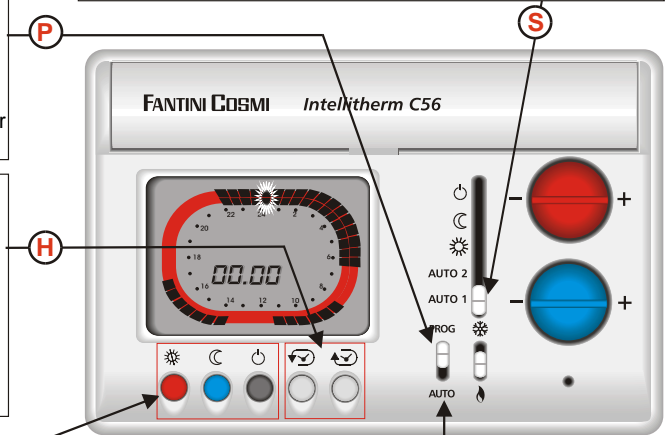
3 Move the flashing cursor (forwards or backwards) around the ring with the aid of the keys. The sector whose color you want to change will flash on the ring and the corresponding time will appear on the display.

4 Press the buttons to color the sectors on the ring on the display. Each time you press one of the three buttons, the sector becomes colored and the cursor moves forward by half an hour; use:

- the red buttons for a red sector
- the blue buttons for a half red and half black sector
- the black buttons for a black sector.

To move the cursor without changing the color of a sector, use the buttons.

1 Move the switch S to the program you want to change (AUTO 1 for weekdays or AUTO 2 for weekends and holidays)



5 After completing all the changes, bring the switch P into the AUTO position.

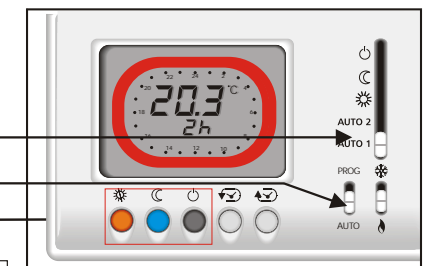
## WILD CARD FUNCTION

With *Intellitherm C56*, you can temporarily cut out the automatic program at any time, without losing it, in order to obtain a given temperature (comfort, economy, or off) continuously for an interval ranging from 1 to 240 hours.

1 Put the switch S on the AUTO 1 or AUTO 2 position

2 Put the switch P on the AUTO position

3 Press the red (or blue or black) buttons to establish the number of hours (shown on the display) during which time you want to cut out the automatic program and temporarily "force" the comfort (or economy or off) mode. The ring on the display will turn the color corresponding to the temperature you have selected.



After the interval established on the *Intellitherm* has elapsed, the automatic program will be restored. To reduce the interval or abandon the wild card option before it has run its course, press a button corresponding to any color other than the one on the ring shown on the display.