

# AXIAL FAN WITH HIGH PERFORMANCE

## ASPIRANTE SERIES

- ➔ Suitable to extract the air directly outside or into ducts
- ➔ Reduced spigot
- ➔ Suitable for wall, ceiling and window installation
- ➔ One model fits 4 duct sizes by mean of a KIT included in the box suitable for Ø80-100-120mm ducting



Ø 80 - 90\* - 100 - 120 mm

\*Available as accessory

### DESCRIPTION:

Aspirante's modern and unique design makes it suitable for any environment.

For intermittent or continuous ventilation of bathrooms, kitchens or utility rooms of both domestic and commercial premises.

Aspirante is suitable to extract the air directly outside, into ducts.

The possibility of using it for window installation by mean of a special kit (Aspirkit Vetro) makes Aspirante suitable for a wider range of applications.

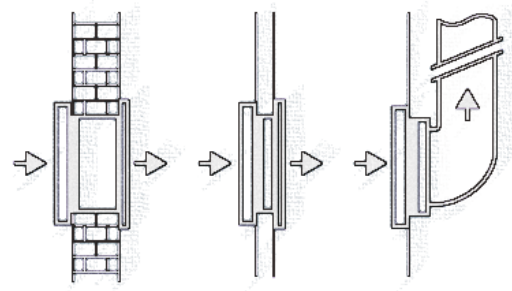
The reduced spigot makes it suitable for every wall installations even with a duct bend very close to fan outlet.

### MAIN FEATURES:

- Made of shockproof and anti-UV ABS plastic.
- Induction motor with thermal cut out - insulation class F
- Maximum ambient temperature 45 °C



IPX4 CE



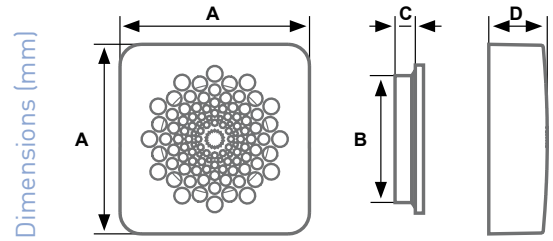
- Timer version: overrun timer settable from 45 sec. to 20 minutes
- HT version: Humidity sensor settable between 40% and 80% rh.

### ACCESSORIES:

- Window Kit
- Timer to be fit on standard models
- Adapter Ø 90 mm
- Gravity shutter
- Fixed grille

## DIMENSIONS

MODEL	A	ØB	C	D
ASPIRANTE	180	79,5	19	57
		93		
		98		
		119		



## TECHNICAL SPECIFICATIONS

### STANDARD - S

CODE	MODEL	Ø	m <sup>3</sup> /h	Pt max mmH <sub>2</sub> O	W	A	V~	Hz	dB(A) 3mt	Kg
AP3100	ASPIRANTE	80	55	8,8	23	0,1	230	50	41,5	0,7
		90	90	8,5	23	0,1	230	50	41,5	0,7
		100	100	8,8	23	0,1	230	50	43	0,7
		120	130	9	24	0,1	230	50	43	0,7

### WITH ELECTRONIC TIMER - T

The fan starts operating when the light is switched on and continues to work for a programmable period of time (with a trimmer) between 45 seconds and 20 minutes after the light is switched off.

CODE	MODEL	Ø	m <sup>3</sup> /h	Pt max mmH <sub>2</sub> O	W	A	V~	Hz	dB(A) 3mt	Kg
AP3102	ASPIRANTE T	80	55	8.8	23	0,1	230	50	41,5	0,7
		90	90	8.5	23	0,1	230	50	41,5	0,7
		100	100	8.8	23	0,1	230	50	43	0,7
		120	130	9	24	0,1	230	50	43	0,7

### WITH AUTOMATIC HUMIDITY CONTROL - HT

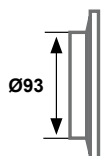
The fan automatically starts to operate when the relative humidity level in the room exceeds the pre-set value and it continues to operate until the RH level returns below the preset threshold. When this threshold is reached, TIMER function allows the extractor fan to continue working for a period of time that can be set from about 45 seconds to 20 minutes, to further reduce relative humidity in the room. The relative humidity value can be set from a minimum of 40% RH to a maximum of 80% RH. This extractor fan can be used manually, also using the TIMER function.

CODE	MODEL	Ø	m <sup>3</sup> /h	Pt max mmH <sub>2</sub> O	W	A	V~	Hz	dB(A) 3mt	Kg
AP3104	ASPIRANTE HT	80	55	8.8	23	0,1	230	50	41,5	0,7
		90	90	8.5	23	0,1	230	50	41,5	0,7
		100	100	8.8	23	0,1	230	50	43	0,7
		120	130	9	24	0,1	230	50	43	0,7

## ACCESSORIES

### ADAPTER Ø90 MM

CODE	MODEL	for use with:
AP0902	ADAPTER Ø90 ASPIRANTE	all models ASPIRANTE series



## WINDOW APPLICATION KIT

Allows to realize an easy and safety installation on a single or double glazing window of thermopan type, up to a maximum thickness of 15 mm



CODE	MODEL	for use with:
AP0900	ASPIRKIT VETRO N	all models ASPIRANTE series

## TIMER

Allows the fan to start the operation when the light switched on and it continues to work for a programmable period of time between 45 seconds and 20 minutes, after the light is switched off.

CODE	MODEL	for use with:
AP 0904	ASPIRTIMER N	ASPIRANTE AP3100

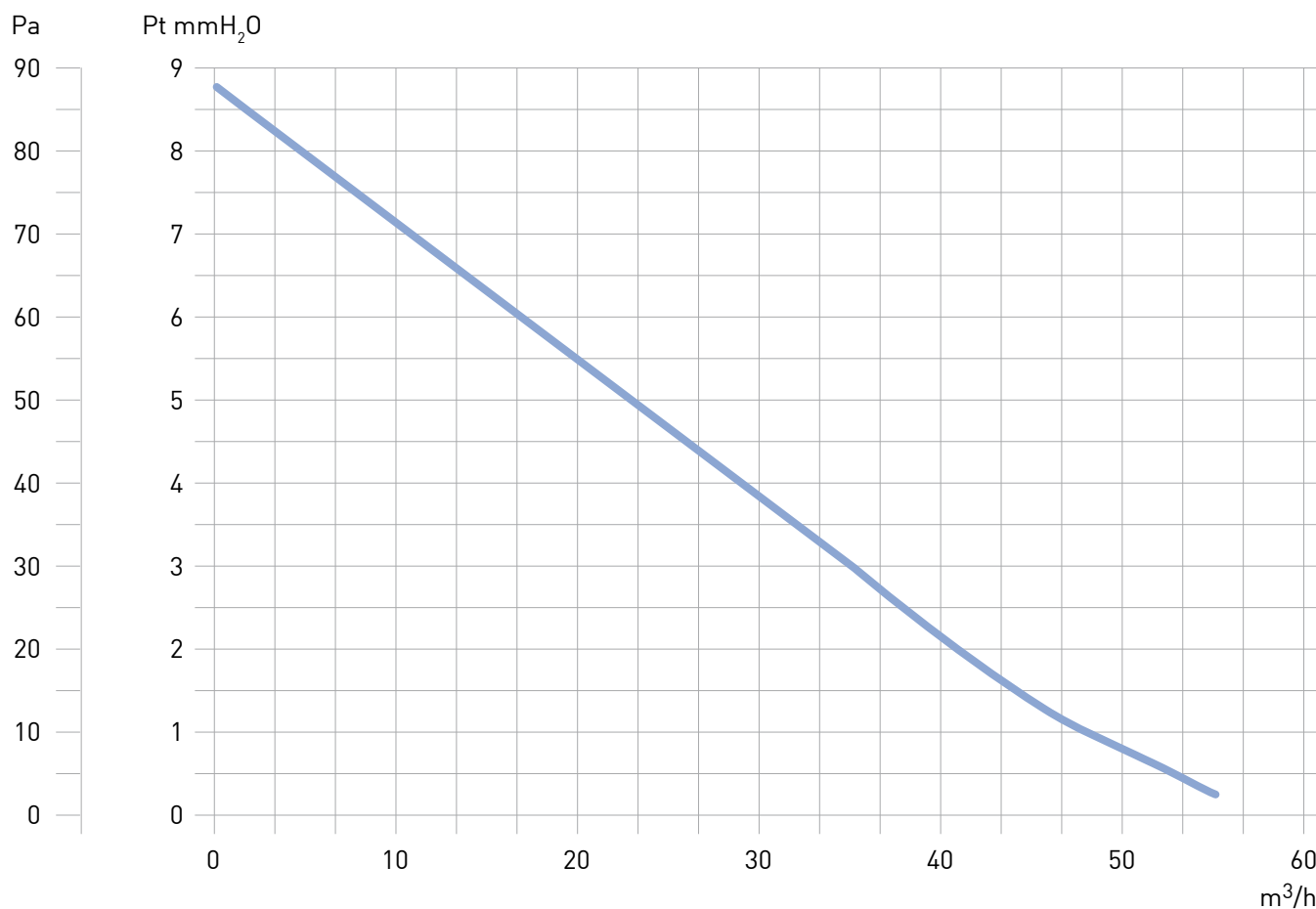
## HUMIDITY CONTROL WITH TIMER

Allows the fan to start the operation when the relative humidity level in the room exceeds the pre-set value and it continues to operate until the RH level returns below the preset threshold. When this threshold is reached, TIMER function allows the extractor fan to continue working for a period of time that can be set from about 45 seconds to 20 minutes, to further reduce relative humidity in the room. The relative humidity value can be set from a minimum of 40% RH to a maximum of 80% RH. This extractor fan can be used manually, also using the TIMER function.

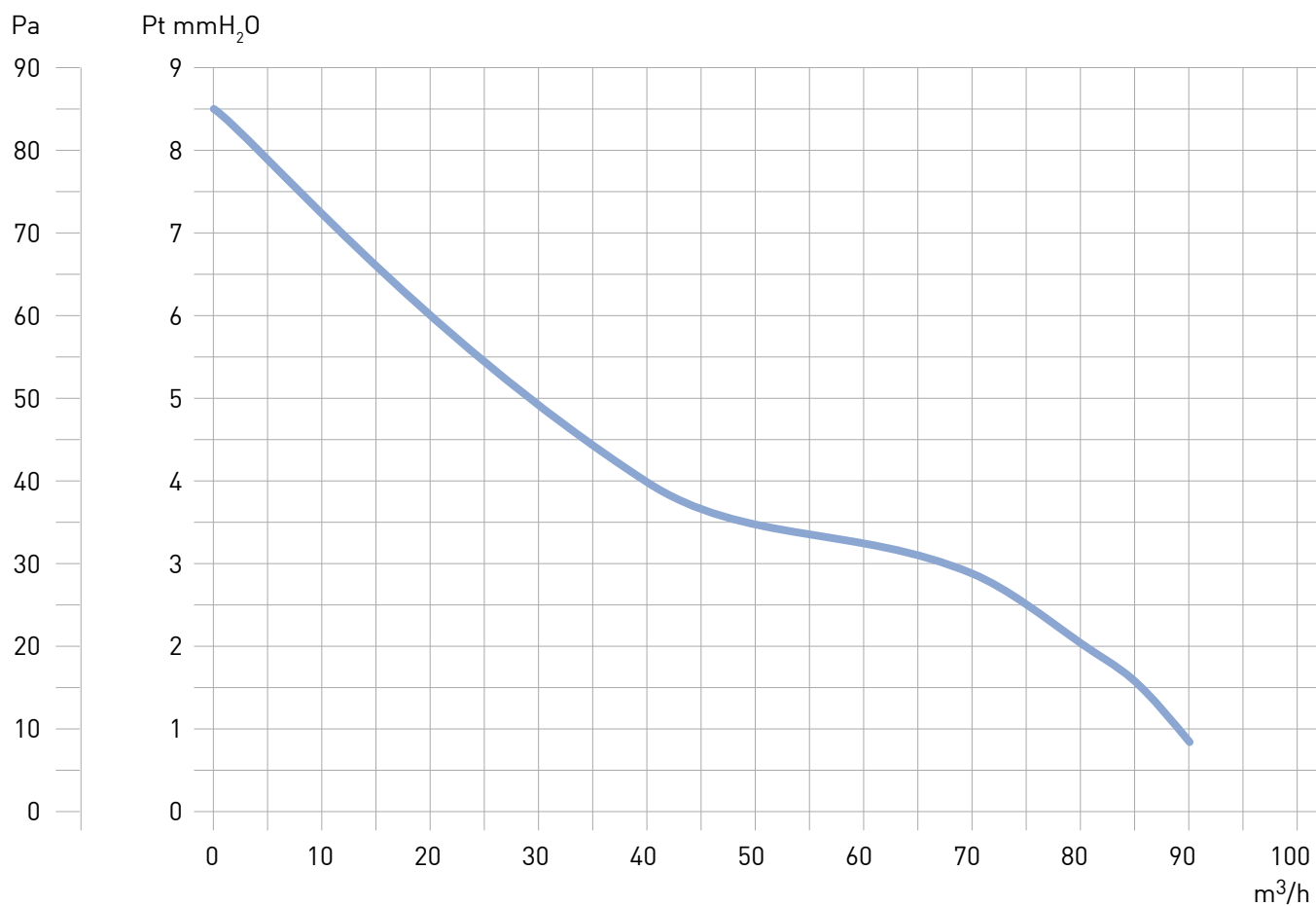
CODE	MODEL	for use with:
AP 0906	ASPIRHYGRO TIMER	ASPIRANTE AP3100

## CHARACTERISTIC CURVES

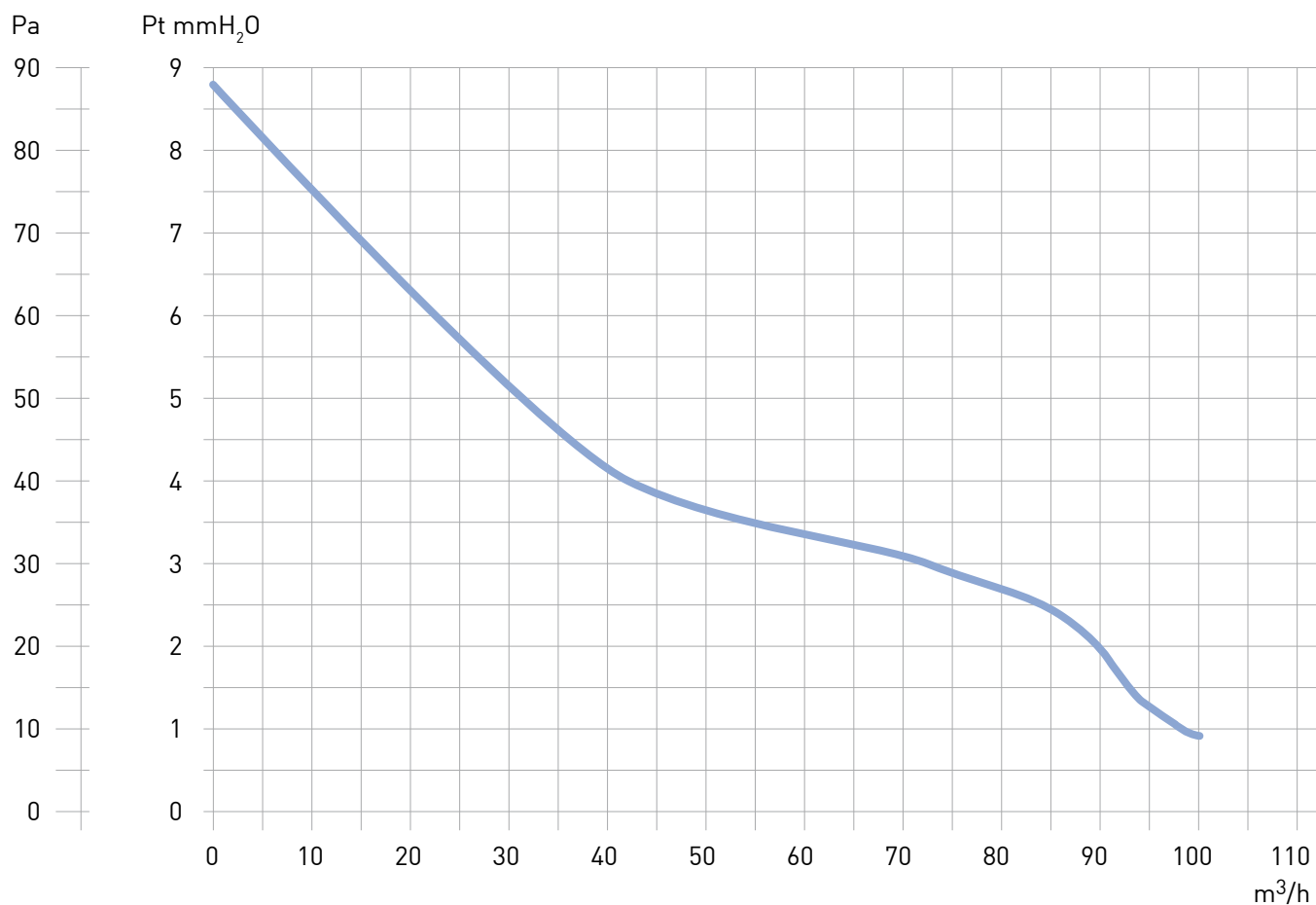
### ASPIRANTE SERIES - Ø 80 mm / 3" Adapter



### ASPIRANTE SERIES - Ø 90 mm / 3,5" Adapter



### ASPIRANTE SERIES - Ø 100 mm / 4" Adapter



ASPIRANTE SERIES - Ø 120 mm / 5" Adapter

