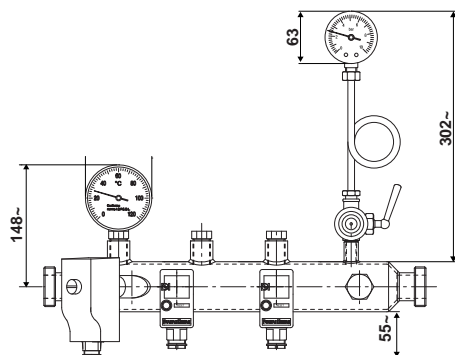


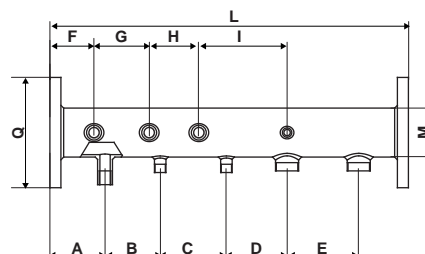
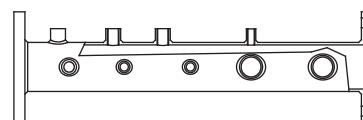
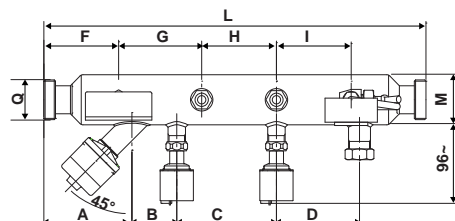
Serie ETK

Assembled manifold

Assembled manifold combines together in a compact way all the components for the safety, protection and control of for heating systems up to 35 kW.



Dimensions (mm)



COD.	Connections	A	B	C	D	E	F	G	H	I	L	M	Q
ETKB	1"1/4(*)	106	54	120	100	-	90	100	90	90	460	60	1"1/2
ETKC	1"1/2(*)	106	121	120	125	-	90	100	90	90	568	101	2"
ETKD	2"(*)	106	121	120	125	-	90	100	90	90	568	101	2"1/2
ETK50	DN 50	100	100	120	100	-	80	100	90	160	520	60	DN 50
ETK65	DN 65	100	100	120	100	120	80	100	90	160	640	76	DN 65
ETK80	DN 80	100	100	120	110	130	80	100	90	160	650	89	DN 80

(*) with connection

	Connection	Connections for the safety relief valve	Safety valve connection type	Weight Kg
ETKB	1"1/4	1	3/4"	5.4
ETKC	1"1/2	1	1"	8.4
ETKD	2"	1	1"	8.7
ETK50	DN50	1	1"	7.1
ETK65	DN65	2	1"1/4 e 1"	8.5
ETK80	DN80	2	1"1/4 e 1"1/4	11.9

OPERATION

ETK series is composed by the following products:

- High limit safety pressure switch with manual reset code B01BMX
- Low limit safety pressure switch with manual reset code B01FML
- Immersion thermostat with manual reset (code 9P6-99306-00A)
- Thermometer code 1590872
- Manometer code 1590874 complete with shock absorber code 7760-14-0A and tap holder code 7750-14-0A
- Connection for fuel valve
- Inspection connection
- Safety valve connection

FEATURES

Manifold body: painted steel S195T

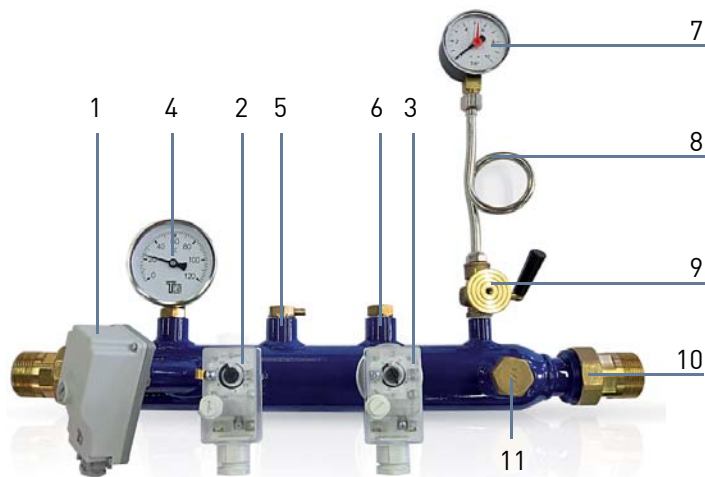
Connections: threaded connections 1"1/4, 1"1/2, 2" and flanged DN50, DN65, DN80

Allowed fluids: water and glycol solution (max 30%)

Max. working pressure: 10 bar

Temperature range: 0 - 110°C

COMPONENTS



1. Immersion thermostat
2. High limit safety pressure switch with manual reset
3. Low limit safety pressure switch with manual reset
4. Thermometer
5. Safety valve connection
6. Inspection connection
7. Manometer
8. Worm pipe - Shock absorber
9. Pressure gauges tap-holder
10. Connections



IMMERSION LIMIT THERMOSTAT WITH MANUAL RESET - 9P6-99306-00A

- Adjustment range: 100°C
- Tolleranza d'intervento: +0 / -6°C
- Thermal gradient 1K/min
- Contacts rating: 16 (4)A 250V~ - 6 (1)A 400V~
- Sensing element max. temperature 120°C
- Protection level: IP43
- Connection: 1/2"



MAXIMUM PRESSURE SWITCH WITH MANUAL RESET - B01BMX

- Range: 2 ÷ 5,5 bar
- Differential minimum for reset 0.6 bar
- Sensitive element max. pressure 7 bar
- Maximum temperature of the controlled fluid: 120 °C.
- Pressure switch max body temperature: 80 °C.
- Protection level: IP44
- Connection: 1/2" F



MINIMUM PRESSURE SWITCH WITH MANUAL RESET - B01FLM

- Range: 0,5 ÷ 2,5 bar
- Differential: > 0,5 bar
- Sensitive element max. pressure bar 6 bar
- Maximum temperature of the controlled fluid: 120°C.
- Pressure switch max body temperature: -35 ÷ 80°C.
- Protection degree
- Connection: 1/2" F con calotta



THERMOMETER - 1590872

- Range: 0-120°C
- Precision class: 2
- Radial connection: 1/2" M
- Pocket included



PRESSURE GAUGE - 1590874

- Range: 0÷10 bar
- Connection: G1/4B



PRESSURE GAUGES TAP-HOLDER - 7750-14-0A

- Nominal pressure PN 25 bar.
- Brass body, 3 way.
- Flange DN 40 for check pressure gauges



WORM PIPE - SHOCK ABSORBER- 7760-14-0A

- Nominal pressure PN 25 bar.
- Copper pipe.

CONNECTIONS

- Connections from 1" 1/4 to 2" according to the manifold version
- Gaskets included

INSPECTION POCKET

- Threaded connection: 1/2"

FUEL SHUT OFF VALVE TRAP

- Connection: 1/2"

INSTALLATION

ETK series must be installed on the supply pipe. They are suitable for either horizontal vertical installation as follows:

HORIZONTAL INSTALLATION

ETK series is suitable for horizontal installation as shown in the picture.

- Rotate the thermostat and the pressure switches in order to have the cable gland facing down. This is necessary to guarantee the IP protection of the single components.
- Rotate the thermometer and manometer in order to allow easy reading.
- In case of safety valve installation rotate it in order to have the discharge outlet facing down.



HORIZONTAL INSTALLATION

VERTICAL INSTALLATION

Installation must be as shown in the picture.

- Rotate the thermostat and the pressure switches in order to have the cable gland facing down. This is necessary to guarantee the IP protection of the single components.
- In order to have easy reading of the thermometer, the use of code 1590870 bac mounting version.
- In order to grant easy reading of the manometer the shock absorber can be rotated avoiding damages to the copper pipe.
- In case of safety valve installation rotate it in order to have the discharge outlet facing down.



VERTICAL INSTALLATION

WARNING: with the first installation it is necessary to eliminate / extract the air left in the manifold that could cause incorrect readings and damage to the different components.

SYSTEM EXAMPLE

