



# 070RL

## WIRELESS RADIATOR THERMOSTAT



- Universal installation
- Display orientation in 3 positions
- Open window detection function
- Ability to lock settings
- Stand-alone operation and possibility of integration into the Fantini Cosmi LoRa® wireless multi-zone temperature control system



Image for illustrative purposes only.



\* if paired with the CH180WIFIRL (WiFi wireless multi-zone programmable thermostat).

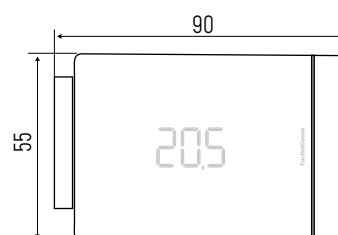
Connection	M30x1,5
Radio modulation	LoRa®
Power supply	2 AA 1.5V alkaline batteries (do not use rechargeable batteries)
Autonomy	up to 12 months (depending on usage mode)
Temperature regulation range	2 ÷ 30 °C; increment 0.1 °C

### STANDARDS AND CERTIFICATIONS

- Compliant with Directive 2014/30/UE (EMC); Directive 2014/35/UE (LVD); Directive 2014/53/EU (RED)






### DIMENSIONS mm

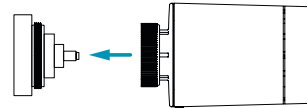


## INSTALLATION

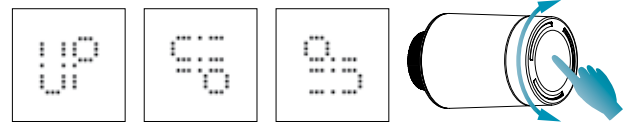
- The smart thermostatic head 070RL regulates the flow of hot water into the radiator based on the set ambient temperature.
- 070RL can be installed on all thermostatic valves with an M30x1.5 connection; if necessary, for other types of valves, use the most suitable adapter (not included in the package).

CODE	DESCRIPTION	
309703A	Adapter for IRSAP/CALEFFI valves	
309704	Adapter for Giacomini valves	
309706A	Adapter for FAR valves	

To proceed with the installation of the head on the radiator valve body, screw the head's ring onto the valve's threaded connection.



070RL can be mounted both vertically and horizontally. Set the display orientation by rotating the knob until the 'UP' label is correctly positioned; confirm by pressing the knob.



## GENERAL CHARACTERISTICS

Connection	M30x1,5
Transmission frequency in ISM band	EU868
RF power	< +14dbm
Radio modulation	LoRa®
Firmware update	via radio (OTA)
Power supply	2 AA 1.5V alkaline batteries (do not use rechargeable batteries)
Battery life	up to 12 months (depending on usage mode)
Temperature display	Celsius (°C)
Temperature regulation range	2 ÷ 30°C; 0.1°C increasing
Operating temperature	0 ÷ 40°C
Storage temperature	-20 ÷ 65°C
Relative storage humidity	20 ÷ 80% (90% without condensation)
Protection rating	IP30

The long-range (LoRa®) technology, used among the components of the multi-zone temperature control system, enables communication that ensures greater signal range, high reliability, and very low power consumption, making it ideal for battery-powered devices.

## ADVANCED FUNCTIONS

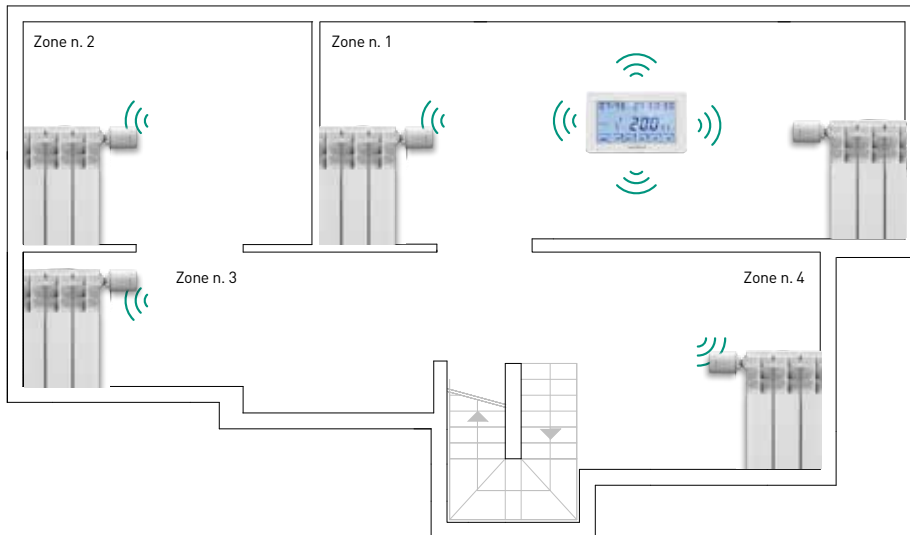
The 070RL wireless radiator thermostats allow to set the desired temperature in each zone or room, adapting to the user's thermal comfort needs and enabling significant heating cost savings.

The actuator acts on the valve piston, opening or closing the water flow to maintain the set ambient temperature.

070RL can be used both in stand-alone mode with local adjustment (where the user can view both the ambient and set temperatures on the valve) and integrated into the Fantini Cosmi LoRa® wireless multi-zone thermoregulation system.

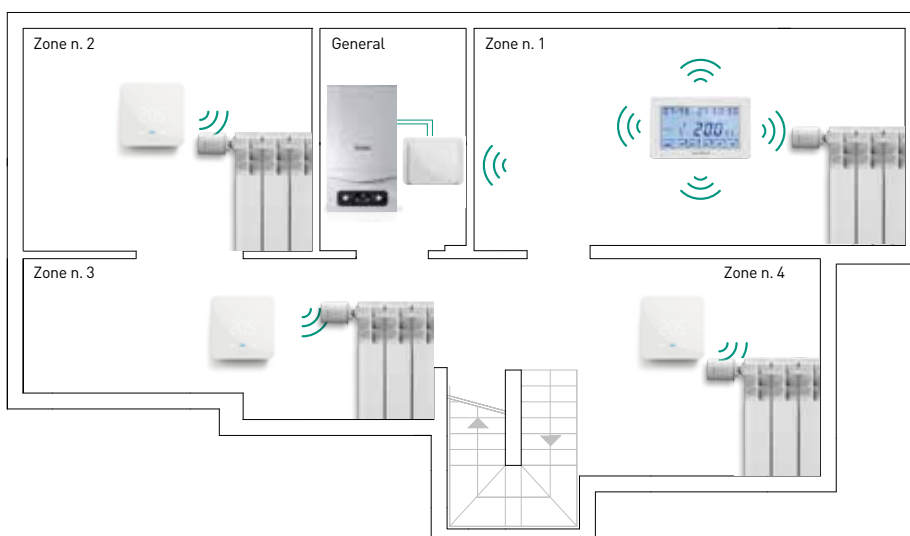
## CONNECTIONS EXAMPLES

### CENTRALIZED SYSTEM WITH RADIATORS



- The CH180WIFIRL multi-zone programmable thermostat directly controls the 070RL radiator thermostat via radio.
- 070RL receive the set temperature value from the programmable thermostat and adjust their operation according to the temperature detected by their internal sensor.

### INDEPENDENT SYSTEM WITH BOILER AND RADIATORS (MOUNTED IN NON-OPTIMAL POSITIONS)



- The CH180WIFIRL wireless multi-zone programmable thermostat receives zone ambient temperature information via the C830RL thermostats and regulates the temperature by sending the relevant commands to the 070RL heads.
- The CH177RL wireless receiver activates the general boiler control.

## REMOTE CONTROL VIA APP

With the Fantini Cosmi App, it is possible to control and modify the temperature and the programs set in each zone through the CH180WIFIRL WiFi wireless multi-zone programmable thermostat, as well as monitor the usage history of the system through daily, monthly, and annual reports.

### EXAMPLE OF INFORMATION FROM A MULTI-ZONE HEATING SYSTEM



The Fantini Cosmi APP is available for free on



## SPECIFICATIONS

Radiator thermostat with the possibility of use in the Fantini Cosmi LoRa® wireless multi-zone thermoregulation system. Standard M30x1.5mm connection. Compatibility for IRSAP/CALEFFI, GIACOMINI, and FAR valves with adapter (not included). Bidirectional wireless transmission in ISM EU868 band; battery powered (2 AA 1.5V alkaline batteries); compact white PC housing; IP30 protection rating. Compliant with RED directive (2014/53/EU). Remote management possible via APP if paired with CH180WIFIRL WiFi wireless multi-zone programmable thermostat.

The characteristics referring to the devices in this document are not binding. Fantini Cosmi S.p.A. reserves the right, for reasons of technological improvement, changes in regulations, and commercial purposes, to make modifications without prior notice or public announcement, while maintaining the main functional characteristics of the models.